

**MADE IN GERMANY**

# Li-Polar LS 3.2

## High-End LiPo-Saver

- 3S bis 6S LiPo/LiFePO
- Einzelzellenüberwachung
- BEC-Spannungsüberwachung
- Aufgesteckter/externer Signalgeber
- Warnung über LEDs
- LED-Positionsleuchten
- Ortungsalarm
- Programmierbar über Taster
- Separate PC-Anwendung
- Abmessungen etwa 32x56 mm
- Gewicht etwa 8 Gramm
- 3S to 6S LiPo/LiFePO
- Single cell monitoring
- BEC monitoring
- Mounted/external beeper
- Alarming by LEDs
- LED position lights
- Lost model alarm
- Setup by button
- Specific PC software
- Size about 32x56 mm
- Weight about 8 grams

Li-Polar LS V3.2 - LiPo-Saver

SKU : LPAA300008



**MADE IN GERMANY**

# Li-Polar

# LS 3.2

## High-End LiPo-Saver

# Li-Polar LS 3.2 High-End LiPo-Saver

**Get rid of your stopwatch: Be independent from your style, wind and load or temperature, age, capacity and internal resistance of a battery pack!**

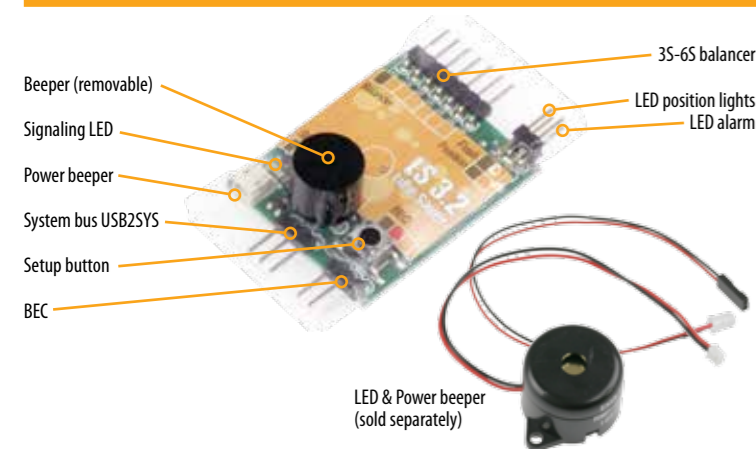
## Product Description

Based on the proven micro system kernel, the intelligent control unit for RC models monitors voltage level of individual cells like a LiPo saver does but offers even more!

The revised third generation supports extra loud beepers, comfortable setup by PC tool and offers constant current drivers for external LEDs: Scale model lights maybe connected here. Of course, a lost model alarm is available as well as BEC voltage monitoring.

On-board key and LED support an easy setup in the field. Alternatively, adjustments can be done by using PC tool and well-known BEASTX USB2SYS interface. A powerful beeper will signal permanent undershot of first threshold: For small models, signaler can be mounted on Li-Polar LS 3.2 directly. Bigger models may use an extra powerful external one. An alarm will occur once a given load threshold is touched.

## Bedienelemente des LiPo-Savers



## Warning

- Li-Polar LS is no warning or supervising system in terms of safety equipment and must be used in models only!
- Li-Polar LS must not be connected to batteries continuously!
- Li-Polar LS must be protected against humidity, heat and impurities!
- Li-Polar LS must be checked for defects and proper function before use!
- Connectors must not be shortened or connected to power output of battery back!
- Given voltage range must not be exceeded!
- Li-Polar LS beeper must be used only!
- Keep beeper away from ear: Sound intensity may damage hearing!
- Do not look straight into LED: Light intensity may damage sight!
- BEC voltage monitoring and second voltage threshold are enabled by PC setup only!
- Delay of lost model alarm can be changed by PC tool only!
- External powerful beeper is to be used for bigger models!

## Assembly

- Li-Polar LS 3.2: Mounting by glue pad next to battery pack
- Top beeper is pre-assembled considering polarity: Imprinted labeling marks plus terminal directing towards Li-Polar LS 3.2 key (included in Li-Polar LS shipment)
- Optionally available: Powerful external Li-Polar beeper (about 12 g, 14 cm cabling) to be mounted by glue pad and connected according to polarity to speaker plug (insert carefully by using e.g. MICROBEAST adjustment tool, see figure)
- Optionally available: Bright Li-Polar signalling LED (about 1 g, 20 cm cabling) to be mounted by using provided holder and connected to flash plug according to polarity (see figure)



## Startup

- Li-Polar LS 3.2 factory preset is a threshold of 3.3 V. Startup:
- Optional: Connect top beeper and/or external beeper according to polarity (see figure)
  - Optional: Connection of LEDs according to polarity (alarm and/or position lights, see figure)
  - In case enabled by PC tool: Connect Li-Polar LS 3.2 to BEC supply
  - Attach Li-Polar LS 3.2 to balancer connector of battery pack
  - Wait for monitoring sound (in case beeper connected) and signalling: Start off!

## Check Setting

- Li-Polar LS 3.2 does not support a setup check by key and LED in case PC tool was used. Check-up steps:
- Attach Li-Polar LS 3.2 to balancer connector of battery pack
  - Monitoring sound (in case beeper connected) and signalling takes place
  - Press Li-Polar LS 3.2 key shortly
  - Confirmation sound (in case beeper connected) and signalling takes place
  - Number of signals x corresponds to threshold voltage position after decimal point 3.x V per cell (Example: 2 short signals reflect a threshold value of 3.2 volts)
  - Wait for monitoring sound (in case beeper connected) and signalling: Start off!

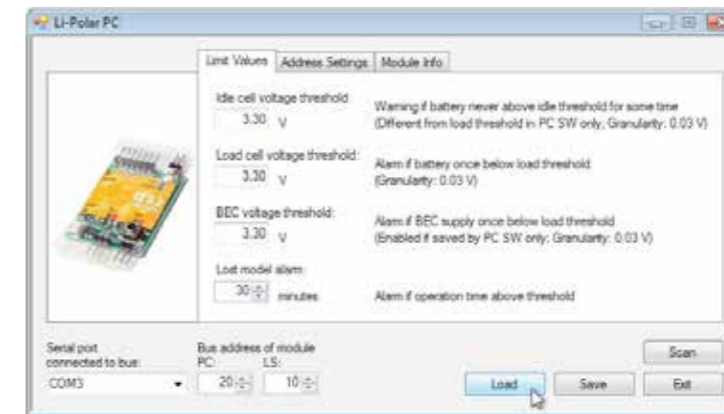
## Change Programming

- Programming Li-Polar LS 3.2 by using key will reset all settings done by PC tool (second voltage threshold and BEC monitoring are disabled). Setup steps:
- Keep key on Li-Polar LS 3.2 pressed
  - Connect Li-Polar LS 3.2 to balancer of battery pack
  - Confirmation sound (in case beeper connected) and signalling takes place
  - Keep Li-Polar LS 3.2 key pressed still as long as favored threshold voltage position after decimal point 3.x V is signalled
  - Release key on Li-Polar LS 3.2
  - Confirmation sound (in case beeper connected) and signalling takes place
  - Wait for monitoring sound (in case beeper connected) and signalling: Start off!

## Detailed Setup Using PC Tool

The PC Tool is available at [www.li-polar.com](http://www.li-polar.com).

- Connect USB2SYS interface to free PC USB port
- Install MICROBEAST updaters and USB2SYS driver
- Install PC tool Li-Polar PC
- Connect Li-Polar LS 3.2 to balancer of battery pack
- Wait for monitoring sound (in case beeper connected) and signaling
- Connect Li-Polar LS 3.2 by patch kabel to USB2SYS interface
- Start PC tool Li-Polar PC
- Chose correct serial port
- Press load key in Li-Polar PC
- Check/change settings
- Press save key in Li-Polar PC



## Disclaimer

The provided information was proofed for accuracy and integrity. However potential mistakes cannot be excluded. We are not responsible for any damage which occurs as a result of these contents. Do not hesitate to send us any suggestions for improvement.

## Copyrights

The actual contents of this publication are protected by copyright law. All rights reserved. Any usage of text or illustrations, even in excerpts, without our permission is illegal and culpable. Particularly this applies to the duplication, translation or usage in electronic systems. The contents of this publication contain registered trademarks, brands and common names. Although those are not expressly designated as such the safeguarding provisions apply accordingly. Li-Polar and MICROBEAST are registered trademarks.

## Declaration of Conformity

It is hereby confirmed that Li-Polar LS complies to given norms. EAR WEEE-REG. Nr.: DE 72549415..

## Specifications

Latest news are available on: [www.li-polar.com](http://www.li-polar.com). Additional information is provided by [www.freakware.com](http://www.freakware.com).

- 3S to 6S LiPo/LiFePO
- Single cell monitoring (2.4 to 4.5 V per cell)
- BEC monitoring enabled by PC tool (up to 9 V)
- Optional mounted or powerful external beeper (85 dB or 105 dB)
- Alarming by 1-5 LEDs (automatic voltage adjustment at 20 mA)
- Position lights up to 8 LEDs (automatic voltage adjustment at 20 mA)
- Threshold setup in steps by on-board key (3.0 to 3.6 V per cell)
- Load and idle thresholds fine adjustment by PC tool (up to 4.50 V per cell)
- Lost model alarm (delay adjustment by PC tool)
- Size about 32x56 mm
- Weight about 8 grams (without beeper)